



Touch-free Door Opening Solutions

ASSA ABLOY
Opening Solutions

Experience a safer
and more open world

No-Touch Solutions

Touchless applications that offer hygienic solutions to unlocking doors



No Touch Exit Switches

When staying in touch requires hands-free activation.

Securitron WSS Wave Sense Technology

- Adjustable detection zone from 4 to 24 inches
- Available in single and double-gang options
- No moving parts for simple, reliable operation
- 1x SPDT 1 A relay



Alarm Controls NTS-1 No Touch Sensors

- Adjustable detection zone up to 4 inches
- Available in single, double-gang and narrow stile options.
- Bicolor LED status indicator
- 1 to 35 second adjustable time delay
- 1x SPDT 2 A relay



Exit Motion Sensors

Why touch the door when a Request-To-Exit (REX) motion sensor can do it for you?

Securitron XMS

- Up to 20 ft detection zone
- Adjustable passive infrared beam pattern
- Field configurable relock time up to 8 seconds
- 1x SPDT relay



Alarm Controls SREX-100

- 20 to 48 inch detection zone
- Narrow active infrared beam pattern for increased accuracy
- Designed to eliminate cross-traffic activation
- Immune to thermal changes
- Adjustable time delay from 1 to 60 second
- 1x DPDT relay



Wireless Transmitters & Receivers

The best complement is remote access at the push of a button.

Alarm Controls RT-1 & RT-3

- Available kit options with (1) or (3) transmitters
- Capable of supporting up to 30 transmitters
- Protected by encrypted rolling code
- 1x SPDT 1 A relay



Architectural Door Accessories

Hands-Free Door Pulls

Today's environment requires less contact with surfaces that are commonly touched to help reduce the transmission of germs. A hands-free door opening can minimize a multitude of skin-to-surface touch-points throughout the day.

ASSA ABLOY arm and foot pulls are easy, cost-effective options for hands-free door operation in new and pre-existing aluminum, metal or wood openings, such as entrances, corridors and restrooms.



Arm Pulls

AP1140 Arm Pull

The AP1140 can be mounted above a pre-existing door pull for a quick hands-free addition, or can be used independently.



Finishes	Dimensions	Material
US32DMS 10BE BSP / WSP Stock PC's	Base Plate Width: 2" Pull Width: 1-1/2" Projection: 4-1/2" Clearance: 4-3/8"	1/8" Thick Stainless Steel

AP1141 Arm Pull

Both a retrofit, or stand-alone solution, the AP1141 provides a simple way to open a door without your hands.



Finishes	Dimensions	Material
US32DMS 10BE BSP / WSP Stock PC's	Base Plate Width: 2" Pull Width: 1-1/2" to 3/4" Projection: 4-1/2" Clearance: 4-3/8"	1/8" Thick Stainless Steel

AA1020-01 Arm Pull with Plate

Featuring rounded corners on the backplate, the groove on the inside of the AP1007 pull comfortably accepts your arm to open the door.



Finishes	Dimensions	Material
SSS	400mm L*100mm W*1.5mm Thickness with handle 19mm*170mm	Stainless Steel

Arm Pulls

193 Hand/Arm Pull

Our comfortable 193 pull can be used the traditional way by pulling on the grip, or, an arm can be hooked underneath, for a no-touch solution.

Finishes	Dimensions	Material
US32D	Center-to-Center:	Cast Brass
US32DMS	5-15/16" Overall Length:	Stainless Steel
US3 / US4	9-1/4" Projection: 3-3/4"	
US10 / US10B	Clearance: 1-5/8"	
10BE		
BSP / WSP		
US26 / US26D		



Foot Pulls

FP1230 Foot Pull

The FP1230 can be used with two different movements.

- 1. Place your foot on the top grip and pull the door open.
- 2. Put your toe underneath and pull the door towards you.



Finishes	Dimensions	Material
US32D US32DMS 10BE BSP / WSP Stock PC's	Center-to-Center: 6" Projection: 3-1/4" Clearance: 3-1/16"	Stainless Steel

494 Door Holder/Foot Pull

Our existing 494 door holder now has a dual purpose. Place the strike on the bottom of the door to use as a foot pull. Then, mount the holder to the wall adjacent to the strike and utilize as a door holder when keeping a free passageway is required.



Finishes	Dimensions	Material
US3 / US4 US10 / US10B 10BE BSP / WSP US15 US26 / US26D	Strike Base: 2"w x 3"h Strike Projection: 3-1/4"h Holder Base: 3"w x 3-3/8"h Holder Projection: 2-1/8"h	Cast Brass

AA FT60

Foot Pull allows the opening of any door without the use of hands.

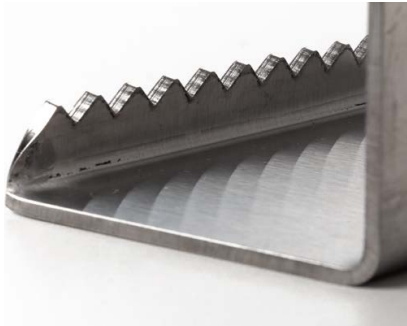
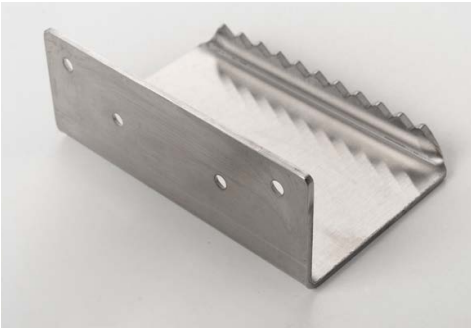
Product Features

- Open door without the use of hands
- Thru-bolted for maximum durability
- Made of high grade, type 316 1/8" thick stainless steel 32D



Applications

- Hospitals & Health Care Facilities
- Rest Rooms
- Educational Facilities
- Shopping Malls
- Office Buildings
- Store Fronts
- Airports
- Stadiums
- Factories



Note:
1. Not for Bare Feet
2. Not exactly as shown

Touch less Foot Pull Opener

ASSA ABLOY



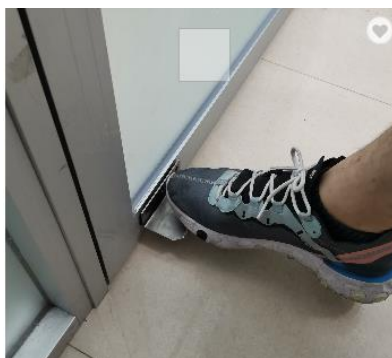
- Material: Stainless Steel
- Finish: Sanding
- Size: 100mm L*70mm W*2mm Thickness
- Model Number: AA105-02
- Feature: Easy Installation and durable



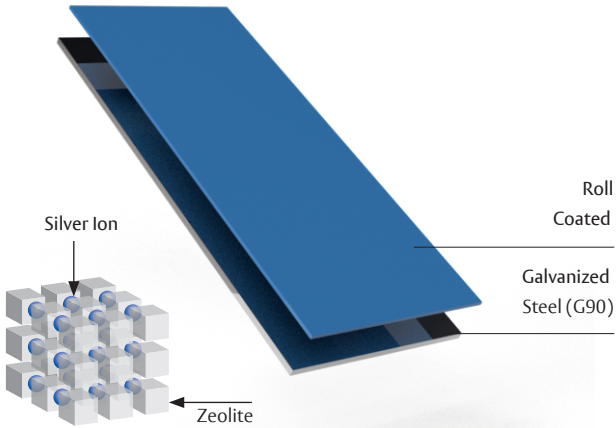
Touch less Foot Pull Operator



- Material:Stainless Steel
- Finish: Sanding
- Size: 50mm L*70mm W*2mm Thickness
- Model Number: AA105-01
- Feature: Easy Installation and durable



Antimicrobial Coating



The agion antimicrobial compound is an inorganic material whose active ingredient is an ionic silver encapsulated in a zeolite matrix for continuous controlled release to the surface of the treated steel. Silver ions suppress the growth of destructive bacteria and other microbes. A polymer based paint containing the compound is applied uniformly to the steel.



Along with proper hygiene practices, antimicrobial protection works to minimize the spread of infection

Solution Overview

The coating process used for the antimicrobial surfaces, known as roll coating, is harder and more effective than powder coating processes as it yields a hardness of 2H pencil while powder coating yields a hardness of only a B-HB pencil.

Benefits

Increase the safety of your space by using our antimicrobial products designed for high touch surfaces.

Applications

The antimicrobial coatings are available for 18, 20 & 26 gauge, G90 steel with a Blue finish protection plates which can be applied with Screws or Tape. The Blue finish allows for a clear visual identification that the part has the coating applied.

Peace of Mind

The mill application process of the antimicrobial coating ensures a long-lasting efficacy under normal wear and tear conditions and most of all, additional peace of mind for the safety of people.



Affordable Solution



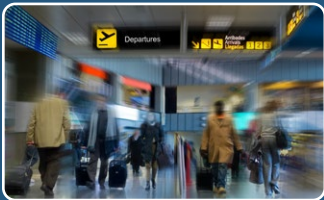
Easy Retrofit



Upgrade Facilities



Long Lasting



Airports



Universities



Sports Venues



Schools



Prisons



Medical Clinics



Hospitals



Restaurants

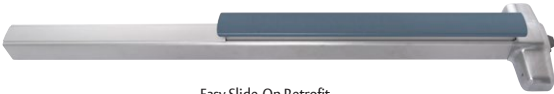
A Smart Antimicrobial Solution for Your Business or Facility

Patent Pending

EXIT DEVICE COVERS



Easy Slide-On Retrofit

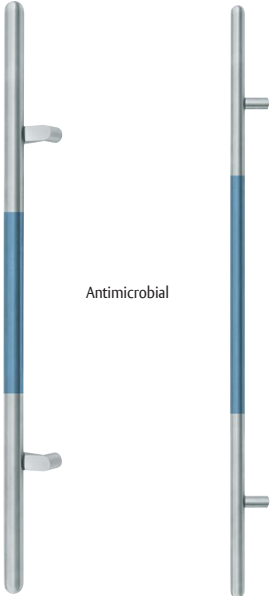


Easy Slide-On Retrofit



Easy Press-On Retrofit

DOOR PULLS



Antimicrobial

EDGE GUARD



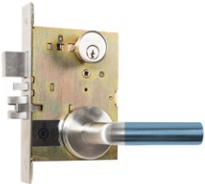
FRAME GUARD



WRAP AROUND PULL



LOCK SETS



PULL PLATE



PUSH PLATES & KICK PLATES



Banquet Halls



Libraries



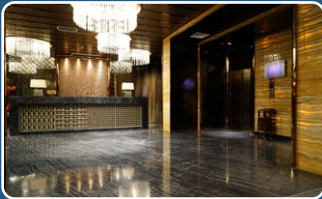
Shopping Malls



Condominiums



Public Washrooms



Hotels



Office Buildings



Factories

Design | Fabricate | Deliver

Your decision to use GSH Antimicrobial Products allows you to offer a degree of protection to common high touch surfaces in your building. We can CUSTOM FABRICATE product solutions or choose from our standard collection. Each product is fabricated to exacting specifications for years of trouble free service.



Easy to Install

Push pad covers either slide on or press on. Push plates, pull plates and kick plates can be either tape applied or screw applied in minutes.

Hand Free Opener & Stylus Environmental Protection



- Material: Zinc Alloy
- Finish: Santin
Nickle/Brass/AB/AC
- Model Number: FH101

MULTIPLE WAYS OF USE



- Usage: Door Opener, Push Elevator Button, Push ATM, Screentouch

Automatic swing door systems

Configurable and adaptable swing door systems for every setting

Find an entrance that meets the needs of your building with our balance, integrated and frame swing door systems

Balance swing door systems

For entrances that need to cope with extreme conditions, and fit in limited space.

The balance swing door system is designed to work in narrow passages and corridors and is strengthened to withstand the pressure of intense traffic, windy conditions, cross-drafts and air pressure. Available in two versions: ASSA ABLOY SW100 B and ASSA ABLOY SW200 B.



ASSA ABLOY SW100 B



ASSA ABLOY SW200 I

Integrated swing door systems

If having a seamless and attractive entrance is essential, try our integrated swing door system.

The integrated swing door system has an integrated operator and no visible arm, creating sleek lines while also minimizing safety hazards. Suitable for buildings where aesthetics matter and high-traffic environments such as schools.

Frame swing door systems

A swing door for busy environments that need robust, stable and safe entrances.

The ASSA ABLOY frame swing door system has a robust and reliable frame profile, suitable for high-traffic areas. Safety features such as finger trap protection and a choice of operator options mean this door can be configured to suit your application.



ASSA ABLOY SW300 F

Optimize your entrances with additional features

TightSeal technology

TightSeal increases the energy efficiency of your automatic swing door system and helps you control air flow. The use of extra brushes and rubber bumpers reduces air exchange by up to 60% compared to standard profiles.

Access control

Access control can be added to all ASSA ABLOY swing door systems. This gives businesses more control over who can pass through their doors, enhancing security and management of flow.

Optimize your entrance with the right swing door operator

ASSA ABLOY swing door operators can be fitted to any existing swing doors in your building

Universal operators

ASSA ABLOY SW100

A push automation button means a swing door with the ASSA ABLOY SW100 operator is well suited to entrances where quick and easy accessibility is essential, such as hospitals or public buildings.



ASSA ABLOY SW200

A strong, heavy-duty swing door operator, the ASSA ABLOY SW200 ensures doors operate smoothly even in heavy winds and with 180 degrees opening in both directions it maximizes use of space. Doors with the ASSA ABLOY SW200 operator are also easy to open manually.



Slim operators

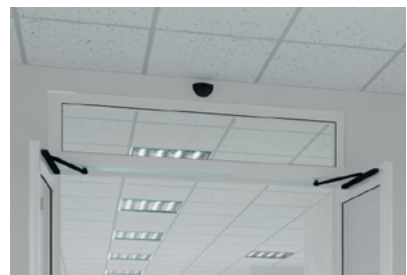
ASSA ABLOY SW150

The slim ASSA ABLOY SW150 operator moves smoothly even in high winds, while power assist means that automated closing is disrupted if people need to pass through. Dynamic breaking prevents doors opening on to obstructions or walls.



ASSA ABLOY SW300

The slim ASSA ABLOY SW300 is one of the strongest operators on the market. It has exclusive emergency features: panic breakout works in both directions and if the power is cut, the doors will open to ensure hazards such as smoke can escape.



Classic operators

ASSA ABLOY PowerSwing

Well-suited to environments where there is a constant and heavy traffic, such as hospitals and busy retail stores. The ASSA ABLOY PowerSwing is a robust and heavy-duty operator designed for all types of door.



The ASSA ABLOY Group is the global leader in access solutions. Every day, we help billions of people experience a more open world.

ASSA ABLOY
Opening Solutions

ASSA ABLOY Opening Solutions leads the development within door openings and products for access solutions in homes, businesses and institutions. Our offering includes doors, door and window hardware, locks, access control and service.